

User Information

Bodytrak 1 Hear:Safe™ Accessories



20240226

The Hear:Safe™ Accessories, for use with Bodytrak 1, are designed to reduce the risks associated with harmful exposure to noise. Each set of Hear:Safe™ Accessories, shown in the fitting guide, includes 2 earbuds and 1 stem to be used alongside the Bodytrak 1 system.

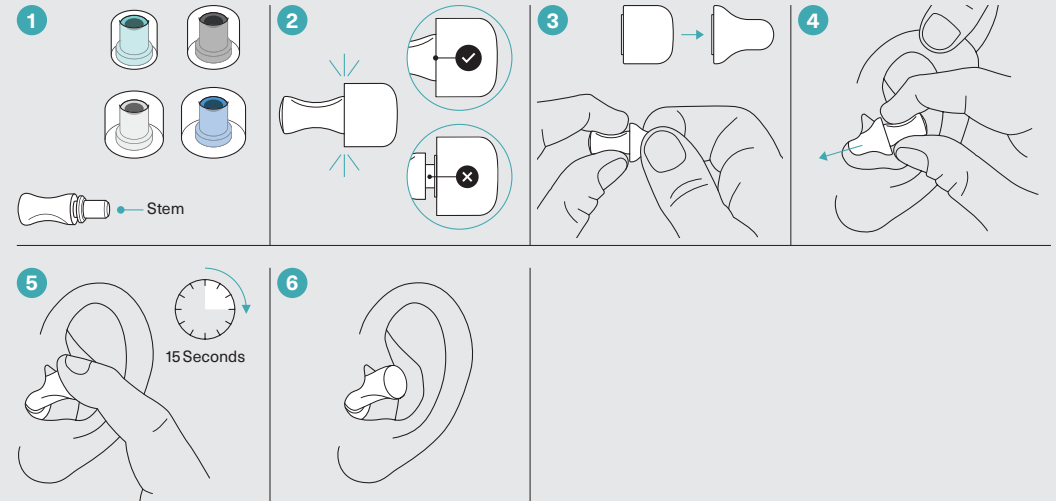
The Bodytrak 1 system provides safety-related audio prompts. Connect the Earpiece to the CommPack and turn on the device by holding the power button until the display shows the Bodytrak logo.

Always set the volume to a comfortable listening level. The battery level is displayed on the CommPack screen and can be charged by placing the Bodytrak CommPack into the provided Charging Dock or Hub. Refer to the Bodytrak 1 Instruction Manual available at bodytrak.co/resources for more information.

Fitting Guide

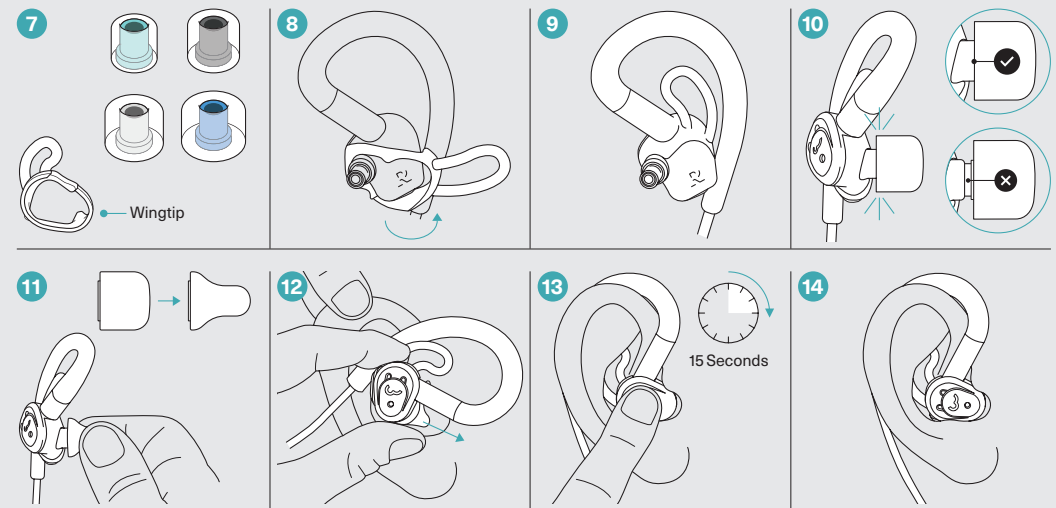
Left Ear

- **1** | Use the largest size earbud that fits comfortably in your ear.
- **2** | Firmly push the earbud onto the stem until you feel it attach. There must not be a gap at the base of the earbud.
- **3** | Squeeze and roll to smoothly compress the foam earbud.
- **4** | Lift your left ear with your right hand while inserting the compressed earbud completely into your left ear canal.
- **5** | Then hold in place for 15 seconds while the foam expands.
- **6** | If the earbud does not fit correctly or fails to completely seal the ear, try a different size. Refit immediately if the seal is broken during use.



Right Ear

- **7** | Use the largest size earbud and wingtip that fits comfortably in your ear.
- **8** | Attach the wingtip by pulling the loop down and around the bottom of the Earpiece.
- **9** | The wingtip must be flush to the Earpiece.
- **10** | Firmly push the earbud onto the Earpiece until you feel it attach. There must not be a gap at the base of the earbud.
- **11** | Squeeze and roll to smoothly compress the foam earbud.
- **12** | Lift your right ear with your left hand while inserting the compressed earbud completely into your right ear canal with the Earpiece rotated forwards.
- **13** | Then rotate the Earpiece to upright and hold in place for 15 seconds while the foam expands.
- **14** | If the earbud does not fit correctly or fails to completely seal the ear, try a different size. Refit immediately if the seal is broken during use.



Cleaning, Storage and Replacement

- The Hear:Safe™ Accessories are disposable but can be reused for a limited time. Use only when clean. Inspect all parts before each use and replace immediately if any damage is found.

- Replace the Hear:Safe™ earbuds: (i) if they have been used for more than 2 weeks (ii) within 3 years of the manufacturing date shown on the packaging (iii) if the foam is torn or flaky (iv) when the foam no longer returns to its original shape.

- Replacement Hear:Safe™ Accessories are available from your Bodytrak representative (or support@bodytrak.co). Reordering codes for each earbud size can be found on the packaging.

- Clean the Earpiece, stem and wingtips by wiping with an alcohol-based wipe. Allow to completely air dry.
- Clean the Hear:Safe™ earbuds by wiping with a damp cloth, using only water. Allow to completely air dry. Do not clean the foam parts with alcohol-based wipes.
- Store and transport when clean and dry and at room temperature. Between uses, store the Earpiece and Hear:Safe™ Accessories in the Bodytrak Earpiece case. Do not store with the foam crushed or compressed.

Attention



EN 352-2:2020, EN 352-9:2020 and PPE Regulations 2016/425

	Frequency (Hz)								SNR	H	M	L
	63	125	250	500	1000	2000	4000	8000				
Mean Attenuation (dB)	25.3	25.5	24.7	23.2	25.0	34.5	38.2	36.6	29.1	32.0	25.6	24.4
Standard Deviation (dB)	3.8	5.1	4.6	3.9	2.6	3.0	3.9	3.2	2.5	1.9	2.6	3.0
Assumed Protection Value (APV) (dB)	21.5	20.4	20.1	19.3	22.4	31.5	34.3	33.4	27	30	23	21

Safety Related Audio Input (Audio Prompts)	
Criterion input signal	-35.0 dBFS
Sound Output Level for Maximum Input Signal	102.8 dBA at -14 dBFS
Usage Time for the Maximum Input Signal that Corresponds to an Equivalent Sound Output Level of 82dBA over 8 hours	0.07 Hours at -14 dBFS

Relationship Between Input Signal and Sound Output Level								
Input Signal (dBFS)	-46.5	-41.5	-36.7	-31.9	-27.1	-22.4	-17.4	
Sound Output Level (dBA)	70	75	80	85	90	95	100	

ANSI S3.19:1974

Frequency (Hz)	125	250	500	1000	2000	3150	4000	6300	8000
Mean Attenuation (dB)	25.0	24.3	23.4	24.5	35.6	39.7	38.5	38.8	36.7
Standard Deviation (dB)	5.7	4.8	4.2	3.4	3.5	2.7	3.1	4.0	2.6

- The level of noise entering a person's ear, when hearing protector is worn as directed, is closely approximated by the difference between the A-weighted environmental noise level and the NRR. EXAMPLE: (1) The environmental noise level as measured at the ear is 92 dBA; (2) The NRR is 19 decibels (dB); (3) The level of noise entering the ear is approximately equal to [92 dB(A) - NRR] dB(A). CAUTION: For noise environments dominated by frequencies below 500 Hz the C-weighted environmental noise level should be used.
- Improper fit of this device will reduce its effectiveness in attenuating noise. Consult the enclosed instructions for proper fit.
- Although hearing protectors can be recommended for protection against the harmful effects of impulsive noise, the Noise Reduction Rating (NRR) is based on the attenuation of continuous noise and may not be an accurate indicator of the protection attainable against impulsive noise such as gunfire.

AS/NZS 1270:2002

Frequency (Hz)	125	250	500	1000	2000	4000	8000
Mean Attenuation (dB)	24.3	23.4	22.1	24.0	34.0	37.5	36.8
Standard Deviation (dB)	5.0	5.2	4.9	4.4	4.6	4.5	4.6
Mean – Standard Deviation (dB)	19.3	18.2	17.2	19.6	29.4	33.0	32.2

SLC80	24
AS / NZS Class	4

Hearing protector class 4 tested to AS/NZS 1270. When selected, used and maintained as specified in AS/NZS 1269, this protector may be used in noise up to 105 dB(A) assuming an 85 dB(A) criterion. A lower criterion may require a higher protector class.

CSA Z94.2-14 (R2019)

NRR / IRB	19
CSA Class / Classe CSA	BL

Refer to the ANSI S3.19:1974 section for detailed attenuation data.

Reportez-vous à la section ANSI S3.19:1974 pour des données d'atténuation détaillées.

AVERTISSEMENT La protection auditive doit être maintenue et correctement ajustée à tout moment quand il existe un risque d'exposition nocive au bruit, conformément aux informations fournies avec ce produit. Le non-respect de cette consigne peut considérablement réduire la protection auditive fournie et augmenter le risque de blessure et/ou de perte auditive.

Pour obtenir de l'aide, veuillez contacter support@bodytrak.co

Nominal diameter	
Extra Small	8–10mm
Small	9–11mm
Medium	9–12mm
Large	10–13mm

Hereby, Inova Design Solutions Ltd declares that the PPE (Bodytrak 1 Hear:Safe™ Accessories) is in conformity with Regulation (EU)2016/425. Bodytrak 1 is in conformity with the Radio Equipment Directive 2014/53/EU and RoHS 2 Directive 2011/65/EU. The full text of the EU declarations of conformity are available at the following internet address: bodytrak.co/resources

C€1974

Noise Reduction Rating

19

DECIBELS

(WHEN USED AS DIRECTED)

THE RANGE OF NOISE REDUCTION RATINGS FOR EXISTING HEARING PROTECTORS IS APPROXIMATELY 0 TO 30 (HIGHER NUMBERS DENOTE GREATER EFFECTIVENESS)

Bodytrak Connected Solutions, Inc., Miami, FL

Model N°: BHS1X

Federal law prohibits removal of this label prior to purchase

LABEL REQUIRED BY US EPA REGULATION 40 CFR Part 211 Subpart B

Contact Information

For support please contact support@bodytrak.co

- Bodytrak UK (Trading/Operating Address)**
Bodytrak
5 St John's Lane, London, EC1M 4BH
United Kingdom
- Bodytrak UK (Registered Office Address)**
Bodytrak
86–90 Paul Street, London, EC2A 4NE
United Kingdom
- Bodytrak USA (Principal Place of Business)**
Bodytrak Connected Solutions, Inc.
777 Brickell Ave #500-93823
Miami, FL 33131, USA